

**SUNFLEX UK**

Award winning bifold doors,  
sliding doors and glazing solutions

"Our goal is the same as it has been for more than 30 years – to design, engineer and manufacture the most advanced and innovative glazing solutions, exceeding our customers' expectations at every opportunity."



## OUR HERITAGE

For more than 30 years SUNFLEX has designed, engineered and manufactured exclusive glazing products.

From the very beginning our doors have had the quality, unique features, performance and attention to detail that sets them apart from all others.

SUNFLEX UK offer a unique combination of outstanding British design and state-of-the-art German engineering to create industry-leading bifold doors, sliding doors and glass solutions. Each product supplied by SUNFLEX UK embraces the most advanced materials and the latest, cutting edge, manufacturing techniques to create award-winning products.







## AWARD-WINNING PRODUCTS, DESIGNED EXCLUSIVELY FOR YOU

### Heritage

SUNFLEX has been manufacturing doors for more than 30 years. This experience enables understanding of not only how to make the best doors possible, but also how to ensure our customers are happy with their purchase, not just at the moment of installation but in years to come.

### Innovation

For more than three decades we have constantly innovated to create products that don't just look good, they perform perfectly too. Each one of our products, available in the widest range of configurations, is designed to be the best it possibly can be without compromise.

### Quality

When only the best will do, it has to be SUNFLEX. We understand that changing your home is a big commitment and that you want the best system available for you. Each SUNFLEX product is manufactured to exacting standards that lead the industry and we seek out tried and trusted partners to ensure the highest quality of service.

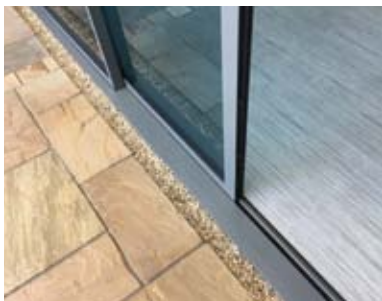
### Performance

Whether you choose our systems because of their smooth operation, advanced thermal standards, highest quality of manufacture or rigorous independent security testing you are safe in the knowledge that our products are designed to perform, day in day out, year in year out.

### Detail

Each one of our products is designed with attention to detail and a whole range of unique features. Many of today's industry standard features were first found on previous generations of SUNFLEX products. It is no exaggeration to say that we lead and others follow.





## SLIDING DOORS

Our advanced and highly engineered aluminium sliding doors offer the perfect solution for larger openings in extensions, renovations or new-builds, maximising the amount of glass and breaking down the boundaries between inside and out.

Both the hugely popular SVG83 with its sleek profile and the SVG35 with its extremely slim sightlines benefit from the same superior performance, advanced design and exacting manufacturing standards that you would expect from SUNFLEX UK.

Available from single panel systems sliding into a pocket all the way up to triple track systems as wide as 24 metres, our aluminium sliding door systems offer effortlessly smooth movement and a huge range of configuration options for almost any requirement.





## SLIDING DOORS SVG35

Sliding doors lend themselves perfectly to larger openings where you can have much larger glass panels. The sleek look of the SVG35 with its incredibly slim 35mm intermediate sightlines is ideal for maximising the amount of light entering a property and breaking down the divide between inside and out to enhance your view.

### Key features

- U-values as low as 1.6Wm<sup>2</sup>K double glazed with a centre pane of 1.0 W/m<sup>2</sup>k.
- Large panel sizes of up to 3 metres wide and for smaller widths 2.6m high achievable.
- Independently weather tested to severe weather rating – Class 7a (300Pa) water tightness, Class 3 (600Pa) air permeability, Wind class AE (2,400Pa) wind loading.
- Excellent security with five-point mushroom headed cam bolts and claw lock.
- Advanced engineering provides stunning appearance and effortless smooth running.

 **PARK FARM  
DESIGN**  
HIGH PERFORMANCE  
DOORS & WINDOWS





# SLIDING DOORS SVG83

The hugely popular SVG83 offers a contemporary look whether opened or closed, perfect for the changeable British climate. The highly engineered system features 83mm intermediate sightlines and is available in a wide range of configuration options with either twin or triple tracks and a recessed level threshold.

## Key features

- Extreme panel sizes of up to 3m wide with total overall openings of over 20m achievable.
- Severe weather rating of 300Pa for water tightness, 600Pa air permeability and 2,400Pa wind load.
- Meets and exceeds PAS 24 security requirements and holds Secured by Design award.
- Achieves a U-value as low as 1.4Wm<sup>2</sup>K triple glazed (1.6Wm<sup>2</sup>K when double glazed).
- Available in lift and slide option for the main door.
- Heavy duty design available with extended track and moveable corner post options.

**PARK FARM  
DESIGN**  
HIGH PERFORMANCE  
DOORS & WINDOWS







## BIFOLD DOORS

Designed and engineered in Germany, the SUNFLEX range of bifold doors has led the market for more than thirty years. Widely regarded as the most advanced systems available each door is hand made to the highest possible standards by experienced technicians.

Whether you choose from the award-winning SF55 or the ultimate in thermally efficiency SF75 in aluminium, the highly engineered timber SF75h system or the stunning SF55c or SF75c composite doors, each system is designed with a wide range of unique features and configuration options.

### Key features

- Innovative panel catches that hold the lead door in place during opening and closing.
- Stacking clip that holds the doors in place when open.
- Handles in line with the door frame to not interrupt your view.
- Gasket behind the hinge to prevent any weakspot for the weather tightness.
- Equally sized slim-line hinges as running gear is hidden when doors are closed.
- The only German manufactured bifolds with a British Kitemark.





## ALUMINIUM BIFOLD DOORS SF55

### Award-winning bifold doors

Our most popular bifold door system, the SF55 benefits from ultra slim 115mm sightlines to maximise the light in your home and maximise your view. A profile depth that is just 55mm deep, slimmer than other systems to minimise the stacking area and maximise your opening. Available in double or triple glazed and open inwards or outwards configurations, the system can be utilised as French doors, single door or a bifold from 2 to 22 doors wide.



### Key features

- Large panel sizes of up to 1.2m wide and for smaller panel widths 3.5m high, perfect for any project.
- Achieves an overall U-value as low as 1.6Wm<sup>2</sup>K double glazed and 1.3Wm<sup>2</sup>K triple glazed.
- Meets and exceeds PAS 24 security requirements and holds Secured by Design award.
- Severe weather rating of 600Pa for water tightness, 900Pa air permeability.
- A choice of 3 bottom tracks to ensure you have the right design for your project.
- Square profiles front and back for a contemporary look.



**PARK FARM  
DESIGN**  
HIGH PERFORMANCE  
DOORS & WINDOWS





# ALUMINIUM BIFOLD DOORS SF75

## Ultra-thermally efficient bifold doors

The SF75 bifold door system has been designed to be the ultimate in thermal efficiency. There is no other bifold that can match all the benefits the SF75 provides. With a massive 44mm multi-chambered thermal break providing an incredibly low overall U-value of 0.9Wm<sup>2</sup>K, whilst maintaining the same incredibly slim 115mm sightline.

### Key features

- Continuous interlocking triple gasket front and back offers ultimate protection from the elements.
- Severe weather rating of 600Pa for water tightness, 900Pa air permeability.
- Versatile system available with panel sizes of up to 3.5m high and 1.2m wide available in open-in or open out configurations with the choice of low-level or weathered track options.
- Achieves an overall U-value as low as 0.9Wm<sup>2</sup>K when triple glazed (1.4Wm<sup>2</sup>K double glazed).
- Meets and exceeds PAS 24 security requirements, holds Secured by Design award and BSI Kitemark.



AS SEEN ON TV  
**GRAND  
DESIGNS**





## COMPOSITE BIFOLD DOORS

Providing the perfect combination of the natural beauty of timber on the inside and maintenance-free aluminium on the outer, our composite bifold doors, with narrow sightlines of just 118mm, are a hugely popular alternative and are available in a wide range of finishes to suit every project.

### SF55c

Our most popular composite door system, the SF55c is ideal to achieve wider panels, whilst exceeding building regulations for thermal efficiency without having to invest in triple glazing. With an overall double glazed U-value of 1.6Wm<sup>2</sup>K and the same independently tested severe weather rating as our aluminium systems, the SF55c provides the perfect composite door option for any project. The system carries PAS24 security certification, a Secured by Design award and the prestigious BSI Kitemark for quality assurance.

### SF75c

As with the SF55c, the SF75c includes all the benefits of the equivalent SF75 aluminium system including the incredible thermal performance and an overall U-value as low as 0.9Wm<sup>2</sup>K with triple glazing. This advanced performance, combined with narrow sightlines and the contrast of aluminium and natural timber make the SF75c a hugely popular choice for customers seeking to renovate or need the best thermal performance for a glazed extension.

## TIMBER BIFOLD DOORS

Our timber bifold doors offer the perfect combination of traditional timber finish and engineered construction, providing greater strength and stability to ensure trouble-free operation. Available in a wide range of timbers and finishes to suit any home, our timber bifold doors offer excellent security and weather performance as standard.

### SF75h

The SF75h system features ultra-slim 122mm sightlines, slimmer than many other aluminium systems on the market. A unique continuous twin seal EPDM gasket design between the panels provide finger protection whilst guaranteeing an effective seal. The system achieves an overall U-value as low as 0.9Wm<sup>2</sup>K when triple glazed and 1.4Wm<sup>2</sup>K double glazed, and achieves an independently severe weather rating of Class 4 (600Pa) air permeability, Class 7a (300Pa) water tightness and Class B5 (2,000Pa) wind load.





# WINDOWS

Our extensive contemporary window range is designed to match in with our aluminium sliding and bifold doors. Including glazing that is perfect for almost any project. From frameless corners to traditional side-hung casement windows, and from top-hung systems to gable end glazing, tilt-and-turn windows, sliding windows and fixed frames, our range is available in double or triple glazing and can be tailored to your exact specification and project.



## Top and side hung

Our most popular window type, the side and top-hung windows can be utilised as replacement systems or for new installations. Opening vents come as standard with a night vent facility providing ventilation whilst the window remains locked.

## Fixed frames

Ideal for increasing the amount of light entering a room or to maximise an external view from the property, these non-operational windows are designed to match the site lines and frames of other windows, providing a consistent appearance across the elevations of the build.



## Tilt and turn

A hugely popular modern option which can offer larger expanses of glass, the tilt & turn window can be opened fully or tilted inwards to provide a larger secure vent opening than conventional outward opening windows. The inward tilt-and-turn mechanism is also ideal for high-level windows allowing them to be easily cleaned from the inside.

## Gable end

Manufactured to meet the exact requirements of each project, gable end glazing can be designed to offer a consistent visual appearance by continuing bifold or sliding door ground floor sight lines into the gable end above.



# FRONT & BACK DOORS

Manufactured in contemporary square-edge profile and offering the perfect combination of aesthetic appeal and outstanding performance, our advanced thermally broken aluminium doors are specifically designed to complement the rest of our product range.



## French doors

Designed and manufactured to the same exacting standards as our bifold doors and with the same threshold options and locking mechanisms, our thermally broken aluminium French doors offer a stylish and sleek alternative option for when space is limited. Available with matching sidelights and integral blind option.

## Single doors

Suitable as a secondary access door to a property, our single doors are most often utilised as a side or back door. With a slim, thermally broken profile and a range of hardware, multipoint locking options and thresholds the doors can be configured to meet almost any requirement.

## Front doors

Choose from 37 different contemporary designs and a range of door colours, plus a choice of stainless steel handle options, trim finishes and hardware options to create a modern and stylish entrance that is perfect for your home – all manufactured to the exacting standards you would expect from SUNFLEX UK.



# ROOFS

We offer a complete range of roof solutions, from flat rooflights to contemporary lanterns, pyramids and lean to thermally broken glazed aluminium systems designed and engineered to the exact specification of each project and to perfectly complement our range of doors and windows.



## Lean to roofs

With an option of a built in structural I beam and a colour matched aluminium gutter this is designed to complement our bifold and sliding doors without additional structural supports in-between. To create light filled extensions to large structural glass roofs that transform living spaces, our thermally broken aluminium glass roofs can be designed to offer the perfect combination of thermal performance and aesthetic appeal.



## Flat rooflights

Choose from our stunning minimalist flat rooflights that offer the ideal option for creating visual appeal and performance. The elegant handmade systems are manufactured to the exact requirements of each project, with the frameless construction maximising the amount of light that enters the new build, renovation or extension.



## Lanterns/Pyramids

Our modern glass lanterns and pyramids with sleek glass to glass joints offer one of the slimmest designs available, maximising the amount of glass used and providing more light to the spaces below. The highly engineered design also provides advanced thermal performance and protection from the elements.



## Warm roofs

Our innovative lightweight warm roof system, designed by Leka and manufactured by own highly skilled team, provides the perfect solution for either replacing an existing conservatory roof or adding a solid roof to an extension. The warm roofs are designed to be incorporated with our bifold and sliding door systems and windows.



# ADDITIONAL SYSTEMS

For more than thirty years SUNFLEX in Germany have led the industry in innovation and product development, designing and manufacturing a range of products that includes widely used systems and options developed for more niche and individual applications.



## SF20

This single glazed frameless sliding door system provides the perfect solution for a number of design challenges. From an internal room divider in an open plan living space, to dividing a bedroom from dressing room or en suite, through to surrounding a balcony or an external patio to create a winter garden the SUNFLEX SF20 is as versatile as it is stylish.

## Slide and turn

Available as frameless or framed system, with top running or bottom running mechanism and in single or non-thermally broken double glazing, the SUNFLEX Slide & Turn doors offer the ability to slide the panels on a single track and to neatly stack them alongside the lead door.

## HSW Moveable walls

Ideally suited for commercial applications, the SUNFLEX HSW range enables wide areas of space to be completely opened up with the panels stacking beyond the opening in a variety of designs. As a top-running system the HSW doors do not require a bottom track, making them perfect for office partitioning, retail shops, cafés, restaurants and leisure facilities.





[info@parkfarmdesign.co.uk](mailto:info@parkfarmdesign.co.uk)

Tel: 01522 869 679

Heritage

Innovation

Quality

Performance

Detail

**SUNFLEX UK** 